

VISUAL Z-ATS GUIDE



HOW TO BUILD A Z-ATS

It's easy to build a Zonit Z-ATS SKU. A **uATS1-HV-YaC13-6-zC14-6** makes more sense once you know the 6 key pieces of information that it identifies. Here is how it works.

1 Z-ATS model

HV
208V/60Hz
8 AMPS

LV
120V/60Hz
12 AMPS

HVE
230V/50Hz
8 AMPS

2 Output type

For integrated
C13 receptacle
without cord
LEAVE BLANK

For single
1'-0" output cord
ADD A Y



3 Receptacle type (female)



uATS1-HV-YaC13-6-zC14-6

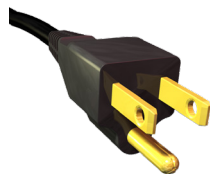
4 Single output cord length

For standard
1'-0" output cord,
LEAVE BLANK.

For optional
6'-0" output cord,
ADD A 6.

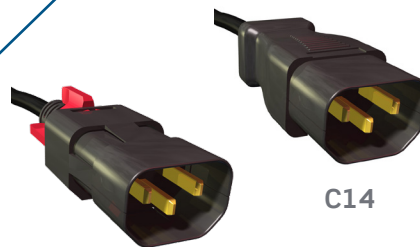
5 Dual input plug (male) types

For LV Models



NEMA 5-15P

For HV - HVE Models



zC14

6 Length of dual input cords

For 2'-0"
input cords
LEAVE BLANK.

For 6'-0"
input cords,
ADD A 6.

